



LE PARC DES
EXPOSITIONS
MONTPELLIER

RECEPTION A



Building surface area
Hall : 1,500 sqm
2 offices: 16 – 17 sqm
Reception can be divided
into 3 parts (for several
events)



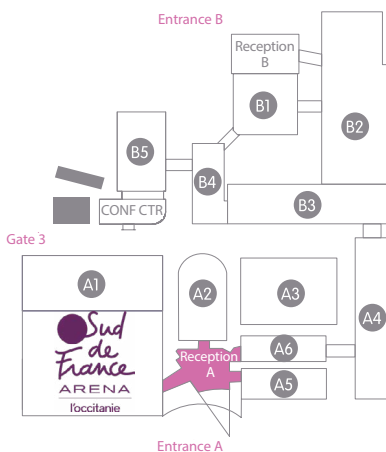
Building height
5.5 to 17 m



Uniform load
1,000 Kg/m²



Services
ATM
1 toilet block
Water fountain
2-stream dustbins
Bike racks



Access – Doors

- > Glazed double doors:
H 2.20m - W 1,55m.
- > 1 wide door to
(Hall 9): H 2.20m - W 3.50m.



Lighting

- > Hall lighting divided into 4 separate
circuits. *Lighting use invoiced
separately.*



Heating

- > Hall heated by circulation of warm
air using 2 air treatment units and
2 gas boilers. *Heating use invoiced
separately.*



Electricity (sur devis)

- > Electricity distribution from walls
and pillars.
- > Possibility of having a range of
electricity outputs in the hall (on
order): from 3kW to 40kW + neu-
tral (i.e. from 16 to 32 amperes).



Sound

- > Public address system piped to
reserved area, from reception
zone



Rigging

- > Possibility of rigging (several
hanging points in the ceiling)
subject to a maximum load per
point of 125 kg. Each request for
rigging points will be examined
in detail by our technical
services. *A load plan in DWG
format must be supplied at least
3 weeks before the beginning of
event set-up. An approved body
must check the plans.*



Telephone / Internet (on quotation)

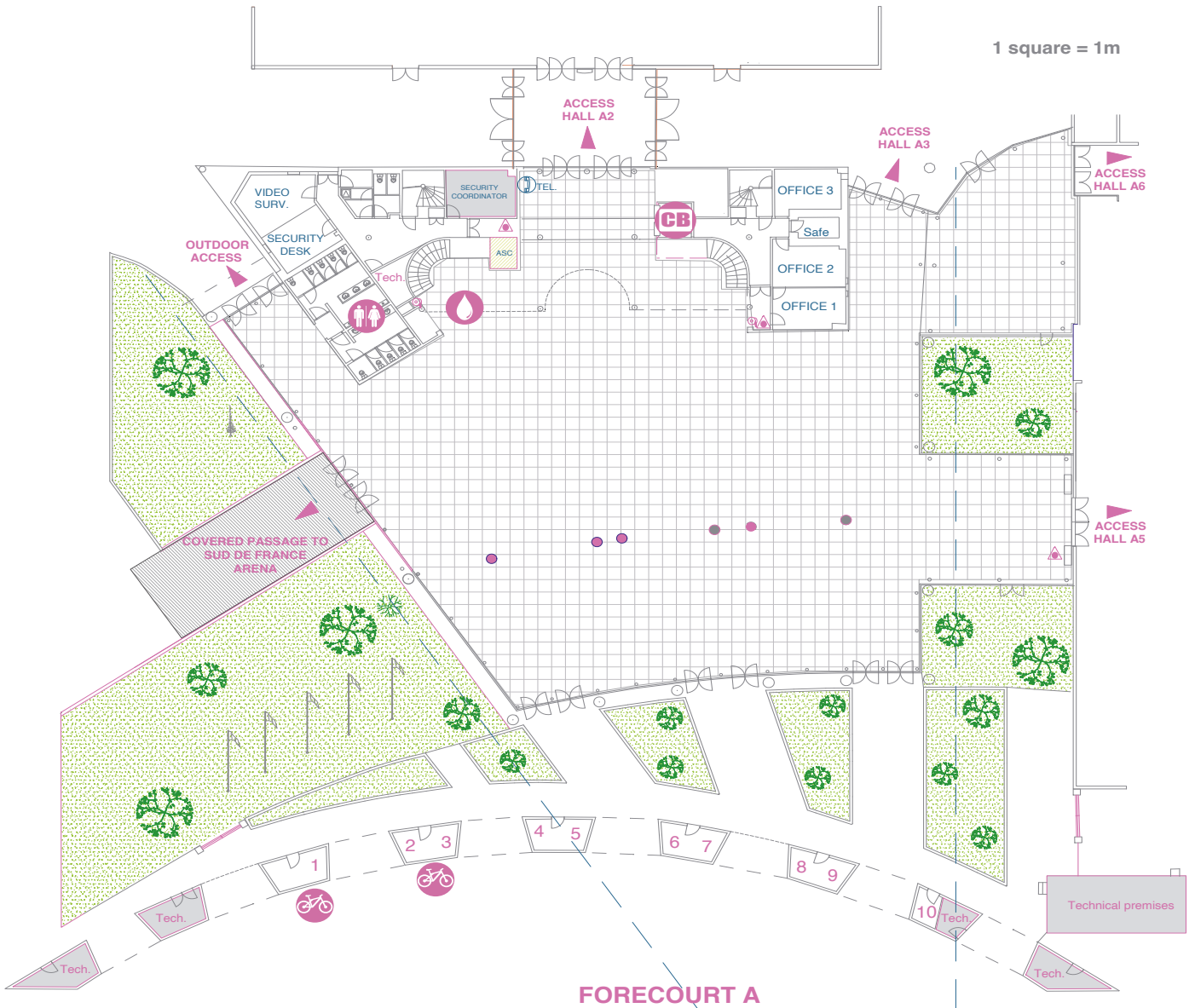
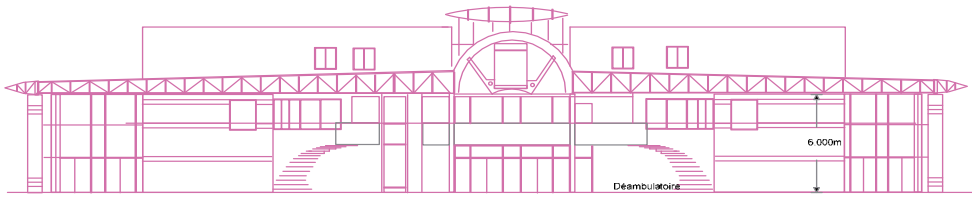
- > Internal phone network (private
automatic branch exchange) –
dial 0 to phone out.
- > Internet connections possible:
wired or Wi-Fi networks.



Water

- > No water supply or outlets in the
hall.

ELEVATION



KEY

- Bike racks
- Toilets
- ATM
- Water fountain

