

HALL A4



Building surface area
4,800 sqm
Room A4: 92 sqm (on
quotation)
Capacity: 70 pax.



Building measurements
L 160 x W 32.50 m



Ceiling height
5.14 to 6.59 m



Uniform load
2,000 kg/m²



Services
2 toilet blocks
2-stream dustbins
Water fountain



Access – Doors

- > Doors / emergency exits H 2.20 m.
- > 3 truck access doors:
W 3.90 m – H 4.40 m and 1 truck
access door: W 5.00 m – H 4.40 m.



Lighting

- > Lighting using fluorescent lights
divided into 4 separate circuits.
Lighting use invoiced separately.



Electricity

- > Distribution though ceiling-
mounted 160 A power tracks
and P17 (32 A) wall sockets.
- > Possibility of having a range of
electricity outputs in the hall (on
order): from 3 kW single phase to
80 kW three-phase + neutral (i.e.
from 16 to 125 amperes).



Heating

- > Hall heated using hydronic unit
heaters. *Heating use invoiced
separately.*



Rigging

- > Only lightweight signage can
be suspended. Each request for
rigging points will be examined
in detail by our technical services.



Telephone / Internet

- > Internal phone network (private
automatic branch exchange) –
dial 0 to phone out.
- > Internet connections possible:
wired or Wi-Fi networks.



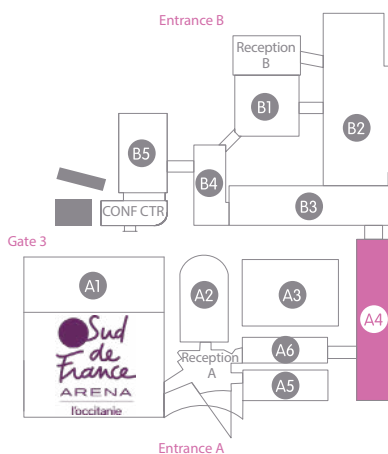
Water

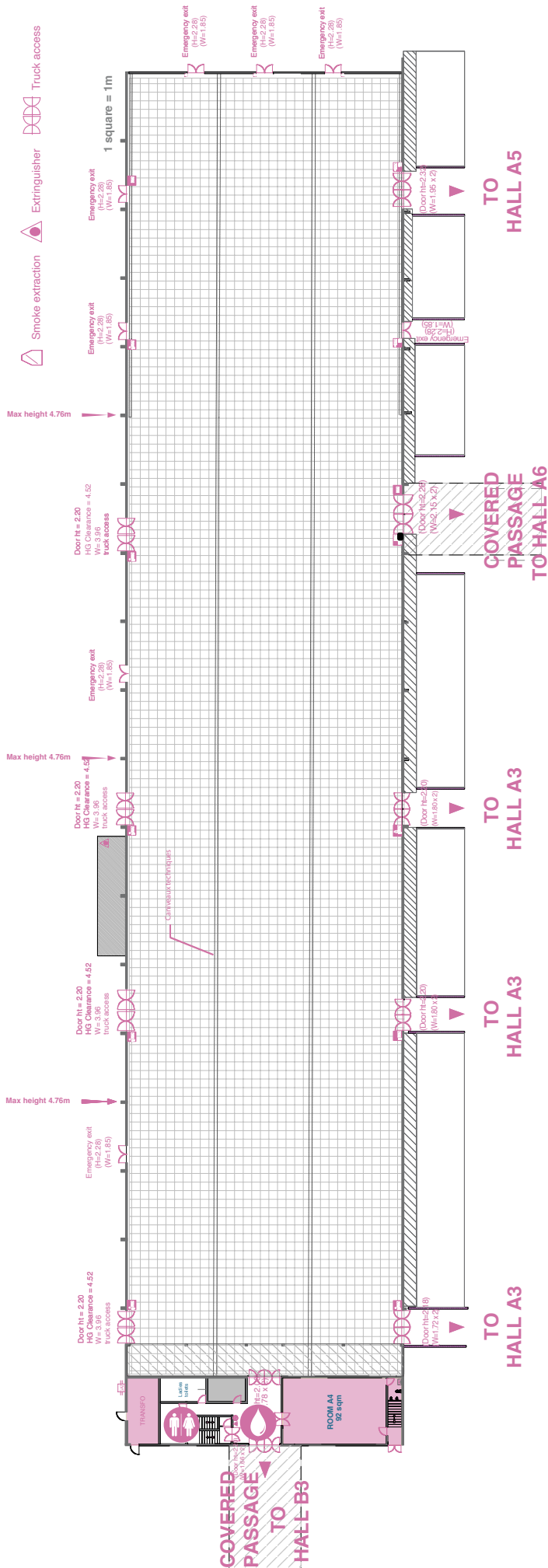
- > Water supply through floor
(trenches, diameter 32) with or
without sink (15/21 fitting).



Sound

- > Speaker system throughout
the hall for public address
announcements.





ELEVATION

