



LE PARC DES
EXPOSITIONS
MONTPELLIER

HALL A3



Building surface area
5,800 sqm
Open hall
Can be closed off using
mobile and airtight walls
(on quotation)



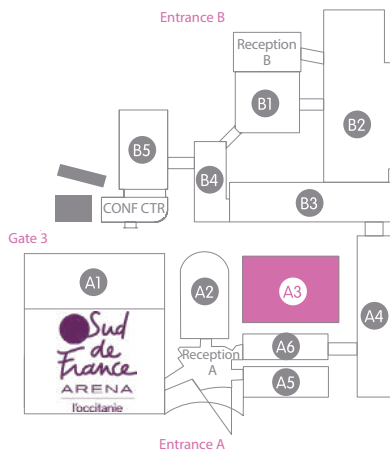
Building measurements
L 90 x W 65 m



Ceiling height
4 to 6 m



Uniform load
2,000 kg/m²



Access – Doors

- > Doors: Only when perimeter walls are deployed.
- > 6 doors / emergency exits (in truck access doors).
- > 8 truck access doors:
W 4.50 m – H 4.50 m.



Lighting

- > Lighting using 80W High Bay LEDs and 2x58W fluorescent lights divided into several separate circuits. *Lighting use invoiced separately.*



Electricity

- > Distribution through ceiling-mounted 160 A power tracks.
- > Possibility of having a range of electricity outputs in the hall (on order): single phase or three-phase and from 3kW to 80kW (i.e. from 16 to 125 amperes).



Sound

- > Speaker system throughout the hall for public address announcements.



Heating

- > Hall not heated but all requests will receive a quotation.
- > Recommendation: 8 heaters of 170kW (Jumbo 170 heaters). Heating use invoiced separately.



Rigging

- > Only lightweight signage can be suspended. Each request for rigging points will be examined in detail by our technical services.



Telephone / Internet

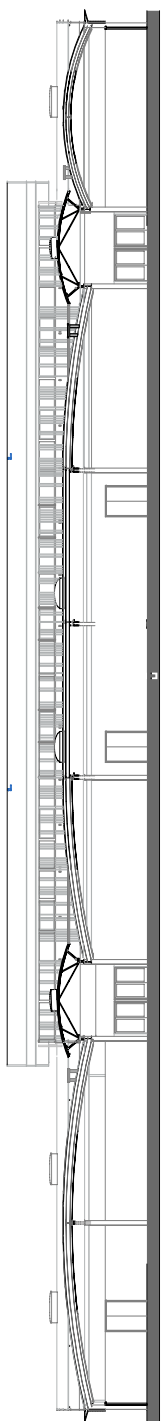
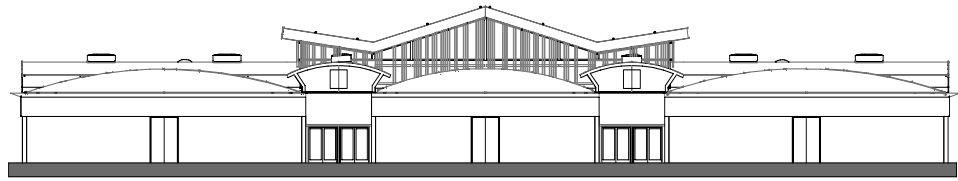
- > Internal phone network (private automatic branch exchange) – dial 0 to phone out.
- > Internet connections possible: wired or Wi-Fi networks.



Water

- > Water supply through floor (trenches, diameter 32) with or without sink (15/21 fitting).

ELEVATION



-  Smoke extraction
-  Extinguisher
-  Truck access

